

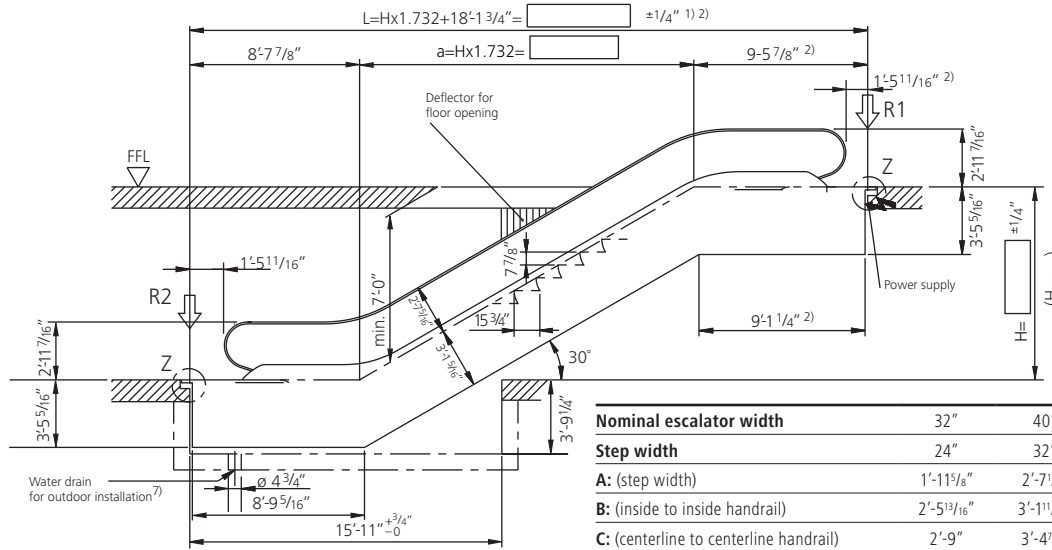
Schindler 9300[®] Advanced Edition

Type 10 30°-M

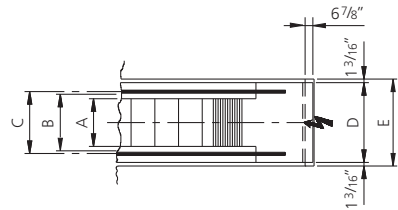
Rise: max. 26'-2 15/16" at a step width of 40"
 Balustrade: Design E/F
 Balustrade Height: 2'-11 7/16"/3'-3 3/8"

Speed: 90/100 fpm
 Inclination: 30°

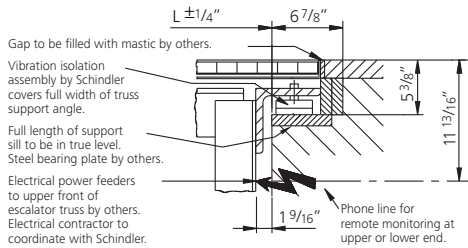
Nominal Width: 32"/40"/48"
 Step Width: 24"/32"/40"
 Step Run: 3 horizontal steps



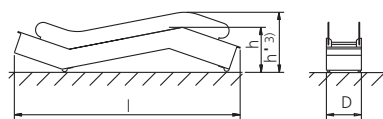
	32"	40"	48"
Nominal escalator width	32"	40"	48"
Step width	24"	32"	40"
A: (step width)	1'-11 5/8"	2'-7 1/2"	3'-3 3/8"
B: (inside to inside handrail)	2'-5 13/16"	3'-1 11/16"	3'-9 9/16"
C: (centerline to centerline handrail)	2'-9"	3'-4 7/8"	4'-0 3/4"
D: (outer deck to outer deck dimension)	3'-8 7/8"	4'-4 3/4"	5'-0 3/8"
E: (wellway opening single unit)	3'-11 1/4"	4'-7 1/8"	5'-3"
E: (wellway opening two adjacent units)	7'-8 1/2"	9'-0 1/4"	10'-4"
Hmax.^{8):} (maximum rise)	39'-4 7/16"	32'-9 11/16"	26'-2 15/16"



Detail Z



Transport dimensions



- Under certain conditions, an intermediate support may be required. For support loads, contact your local Schindler office.
- In the case of a double drive, the truss must be extended by 1'-4 7/16".
- $h' = h + 2' - 6 \frac{5}{16}''$.
- Motor size: for detailed information, contact your local Schindler office.
- In the case of balustrade height 3'-3 3/8", h' is increased by 2 3/4".
- Based on this step run, without truss extension.
- Add 8" to pit depth if oil separator is required.
- For higher rises, delivery in two parts may be required.

Step Width	Rise ft.	Weight lbs.	Reactions—kips		Transport dim.	
			R1	R2	h=Height	l=Length
24"	10	13710	10.34	8.77	7'-1 7/16"	38'-6"
	11	14160	10.79	8.99	7'-2 1/4"	40'-5"
	12	14610	11.02	9.44	7'-3"	42'-5"
	13	15060	11.47	9.67	7'-3 13/16"	44'-4"
	14	15510	11.69	10.12	7'-4 3/16"	46'-4"
	15	15960	12.14	10.57	7'-5"	48'-4"
	16	16410	12.59	10.79	7'-5 5/16"	50'-4"
	17	17090	12.81	11.24	7'-6 1/16"	52'-4"
	18	17540	13.26	11.47	7'-6 7/16"	54'-3"
	19	17980	13.49	11.91	Ⓢ	Ⓢ
	20	19110	14.39	12.59	Ⓢ	Ⓢ
32"	10	14390	11.47	9.67	7'-1 7/16"	38'-6"
	11	15060	11.69	10.12	7'-2 1/4"	40'-5"
	12	15510	12.14	10.57	7'-3"	42'-5"
	13	15960	12.59	10.79	7'-3 13/16"	44'-4"
	14	16410	13.04	11.24	7'-4 3/16"	46'-4"
	15	16860	13.49	11.69	7'-5"	48'-4"
	16	17540	13.94	12.14	7'-5 5/16"	50'-4"
	17	18660	14.61	12.81	7'-6 1/16"	52'-4"
	18	19110	15.06	13.26	7'-6 7/16"	54'-3"
	19	19560	15.51	13.71	Ⓢ	Ⓢ
	20	20230	15.75	14.16	Ⓢ	Ⓢ
40"	10	15290	12.59	10.79	7'-1 7/16"	38'-6"
	11	15960	13.04	11.24	7'-2 1/4"	40'-5"
	12	16410	13.49	11.69	7'-3"	42'-5"
	13	16860	13.94	12.14	7'-3 13/16"	44'-4"
	14	17540	14.39	12.59	7'-4 3/16"	46'-4"
	15	18660	15.06	13.26	7'-5"	48'-4"
	16	19110	15.51	13.71	7'-5 5/16"	50'-4"
	17	19780	15.96	14.39	7'-6 1/16"	52'-4"
	18	20230	16.41	14.84	7'-6 7/16"	54'-3"
	19	20910	17.09	15.29	Ⓢ	Ⓢ
	20	21360	17.54	15.74	Ⓢ	Ⓢ
21	INTERMEDIATE SUPPORT REQUIRED				Ⓢ	Ⓢ

Dimensions shown are for U.S. applications. For specific requirements in Canada, please consult your local Canadian sales office. Subject to change.



Schindler

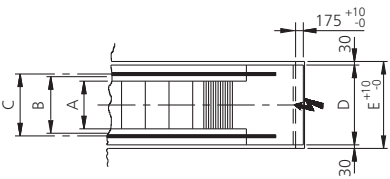
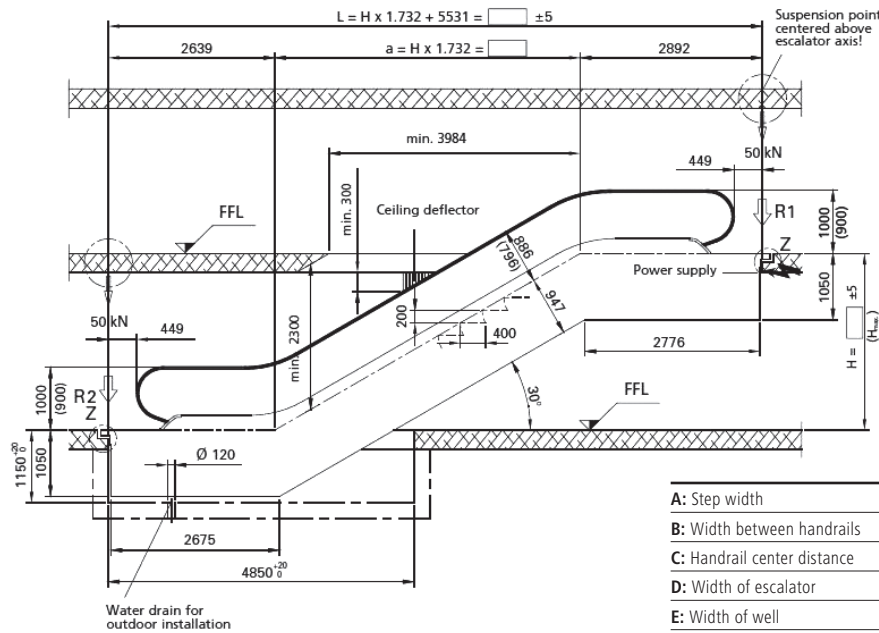
Schindler 9300[®] Advanced Edition

Type 10 30°-M

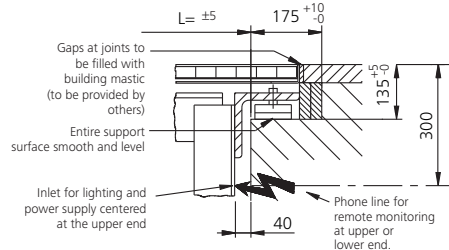
Rise: max. 8 m at a step width of 1000 mm
Balustrade: Design E/F
Balustrade Height: 900/1000 mm

Speed: 0.45/05 m/s
Inclination: 30°

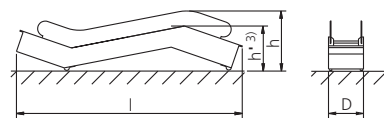
Step Width: 600/800/1000 mm
Step Run: 3 horizontal steps



Detail Z



Transport dimensions



- Under certain conditions, an intermediate support may be required; please consult your local Schindler office.
- In the case of a double drive, the truss must be extended by 417 mm.
- $h' = h - 770$ mm
- Motor Size: For detailed information, consult your local Schindler office.
- In the case of balustrade height 900 mm, h is reduced by 70 mm.
- Based on this step run, without truss extension.
- Add 203 mm to pit depth if oil separator is required.
- For higher rises, delivery in two parts may be required. Dimensions shown are for U.S. applications. For specific requirements in Canada, please consult your local Canadian sales office. Subject to change.

	600	800	1000
A: Step width	600	800	1000
B: Width between handrails	758	958	1158
C: Handrail center distance	838	1038	1238
D: Width of escalator	1140	1340	1540
E: Width of well	1200	1400	1600
Hmax.: Maximum rise	12000	9300	8000

Step Width A mm	Rise H mm	Weight kN	Support loads		Transport Dimensions Balustrade height 1000	
			R1 kN	R2 kN	h ⁵⁾	l
600	3000	61	50	43	2850	11610
	3500	64	53	46	2880	12590
	4000	68	56	49	2910	13580
	4500	71	59	52	2930	14570
	5000	74	62	55	2950	15570
	5500	78	65	58	2970	16560
800	6000	81	68	61	Ⓢ	Ⓢ
	3000	64	57	50	2850	11610
	3500	68	61	53	2880	12590
	4000	71	64	57	2910	13580
	4500	75	68	60	2930	14570
	5000	78	71	64	2950	15570
1000	5500	85	77	69	2970	16560
	6000	89	80	72	Ⓢ	Ⓢ
	3000	68	65	57	2850	11610
	3500	72	69	61	2880	12590
	4000	76	73	65	2910	13580
	4500	82	78	70	2930	14570
	5000	86	82	75	2950	15570
	5500	90	87	79	2970	16560
	6000	94	91	83	Ⓢ	Ⓢ

All dimensions in mm. Observe national regulations! Subject to change.

For further information, including location of the Schindler office nearest you, please visit:
www.us.schindler.com

U.S. Headquarters. Morristown, New Jersey
 Toll-Free 877.696.8382 www.us.schindler.com

Canada Headquarters. Toronto, Ontario
 Tel. 416.332.8280 www.ca.schindler.com

